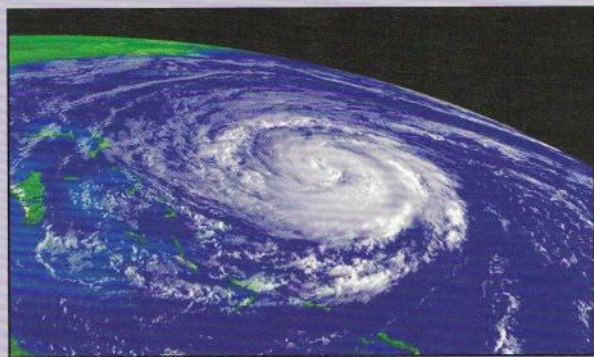
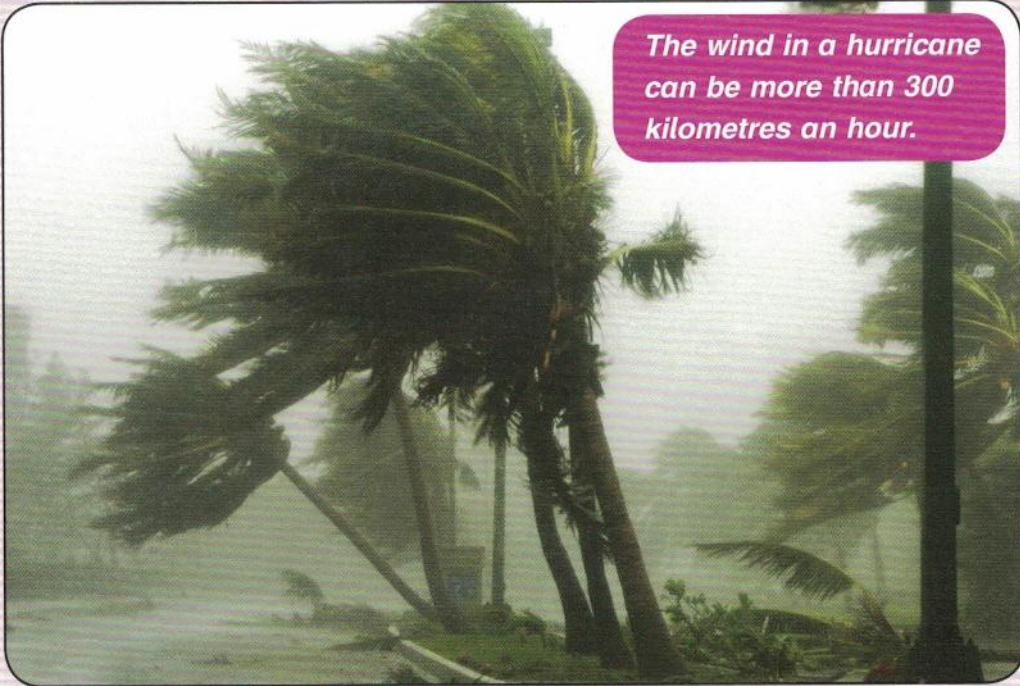


Strong winds

Scientists measure the wind.

- A Force 1 or Force 2 wind is very light.
- A Force 6 wind is strong.
- A Force 12 wind is very dangerous. This is called a *hurricane*.

The wind in a hurricane can be more than 300 kilometres an hour.

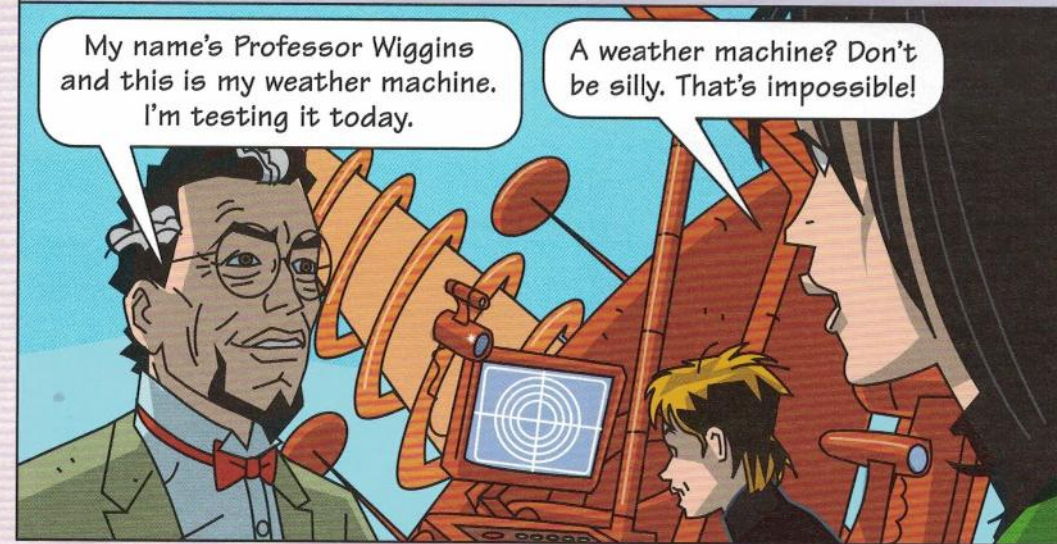


Scientists use satellite photos from space to follow hurricanes. This photo shows a hurricane over the Atlantic Ocean.

The man looked up and smiled. There were lots of buttons, lights and wires on the machine.

My name's Professor Wiggins and this is my weather machine. I'm testing it today.

A weather machine? Don't be silly. That's impossible!



The Professor pressed a button on the machine and suddenly it was windy again. The weather machine really worked!

That's fantastic!

I don't believe it!

